



Double Bullnose in #5000 Cordova Cream
Karen Wagner High School

Architectural Trim Units

Elgin Butler's Ceramic Glazed Architectural Trim Units add unique definition to any project. With an inseparable finish that will never fade or patinate, the units offer the perfect finishing touch. Add details to enrich a form or bring attention to focal points. More cost-effective than stone or precast concrete, Architectural Trim Units offer limitless design solutions.

ADVANTAGES of Ceramic Glazed Brick Properties:

- May be used on exterior or interior walls to accent, highlight or add dimension
- Adds a dramatic look for less cost than natural stone or precast concrete
- Economical installation (installed at the same time as facebrick, using the same mortar and masons)
- Resists fading, chemicals and impact, and will not effloresce
- Units are fired at over 2000°F resulting in an inseparable finish that exceeds ASTM standards

Architectural Trim Units Product Information

- Available in a variety of sizes—*Double Bullnose Trim Units* **6S** (2-1/4" H x 11-5/8" L) or **6P** (3-5/8" H x 11-5/8" L) or **6J** (2-5/8" H x 11-5/8" L); and/or *Water Table Units*—Double King Size **6M** (5-5/8" H x 11-5/8" L) or **6D** (4-7/8" H x 11-5/8" L); or *Column Unit* **4W** (7-5/8" H x 7-5/8" L). All units have the manufacturer's standard unglazed setting bed.
- All finishes, regardless, of color shall be fused to the body at temperatures in excess of 2000°F (1093°C)
- Standard colors are ultra matte Cordova Cream #5000, Graystone #5400, and Chalk White #9500
- Other colors are also available

SPECIFICATION

Architectural Trim Units shall be Ceramic Glazed Fire Clay Units as manufactured by the Elgin Butler Company or approved equal, and conforming to the specifications ASTM C-126, Grade S for properties of finish, Type I, sized for 3/8" mortar joints and ASTM C-652, Grade SW for physical properties. Color samples to be selected from manufacturer's current standard offering.

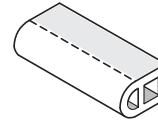


All units have a standard 3-5/8" bed depth

Double Bullnose Trim Units:

3-5/8" x 11-5/8" Face

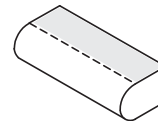
6P/1 - Stretcher



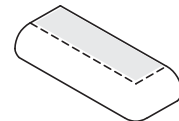
6P/3 - 1" End Cap



6P/2 - Square Corner



6P/4 - Bullnose Corner



Also Available in:

6S: 2-1/4" x 11-5/8" Face

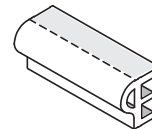
6J: 2-5/8" x 11-5/8" Face

Water Table Units:

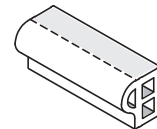
4-7/8" x 11-5/8" Face

5-5/8" x 11 5/8" Face

6D/2 - Stretcher



6M/3 - Stretcher



6D/3 - 1" End Cap



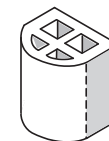
6M/3 - 1" End Cap



Column Unit:

7-5/8" x 7-5/8" Face

4W/1 - Stretcher



0207500-006

Elgin Butler Company

365 FM 696, Elgin, Texas 78621 | p (512) 285-3356 | f (512) 281-2487 | contact@elginbutler.com

www.elginbutler.com

PRODUCTS FOR CREATIVE ARCHITECTURE.