



Johnson & Wales University Academic Building won the 1st Place President's Award in the AIA's Design with Brick competition for Brick SouthEast.

CerraStone

Manufactured by Elgin Butler Company, CerraStone is a structural clay brick with an ultra matte textured finish. This cost-effective masonry product offers the durability of brick and presents the classic appeal of stone. Available in a variety of sizes and colors, CerraStone offers a unique alternative to natural stone for beautiful wall designs that will last a lifetime.

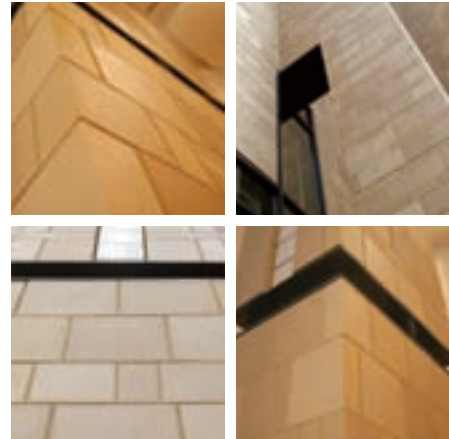
ELGIN | BUTLER 

PRODUCTS FOR CREATIVE ARCHITECTURE.

CerraStone Product Information

BENEFITS

- Cost-effective alternative to stone and poured concrete
- Create a variety of custom patterns by combining sizes and colors
- Ideal for sustainable environmentally-friendly projects
 - No need for painting or chemical-based maintenance
 - CerraStone contains recycled (glazed tile) scrap and reclaimed process waste
 - Ceramic slip coating is permanent, water-based and lead free



SPECIFICATION

CerraStone Brick shall be Quality Ceramic Fire Clay Units as manufactured by Elgin Butler Company or approved equal and conforming to the specifications ASTM C-652-05a/Type HBX or C-216-05a/Type FBX (option of manufacturer) with Ceramic Slip Coating, Grade SW.

- Standard colors in light to medium grays; custom colors available
- Units are finished on face and one end
- Available in smooth or velour textured finish

| Brick Size | Actual Dimensions | Ordering Info | Pcs/Sq Ft | Pcs/Pallet | Wt. Each |
|---------------------------|-------------------|---------------|-----------|------------|----------|
| Closure | 3-5/8" x 7-5/8" | EN/4P2 | 4.5 | 432 | 6.1 |
| Utility | 3-5/8" x 11-5/8" | EN/6P2 | 3 | 324 | 9.1 |
| 8-Square | 7-5/8" x 7-5/8" | 4W2 | 2.25 | 216 | 10.5 |
| 8 x 12 | 7-5/8" x 11-5/8" | 6W2 | 1.5 | 135 | 19.5 |
| 8 x 16 | 7-5/8" x 15-5/8" | 8W2 | 1.125 | 108 | 26 |
| Twelve Square | 11-5/8" x 11-5/8" | 6Y2 | 1 | 90 | 23.8 |
| Standard Bed Depth 3-5/8" | | | | | |

Super Grid Pattern

Modified Ashlar Bond

...or design your own

02075006-007