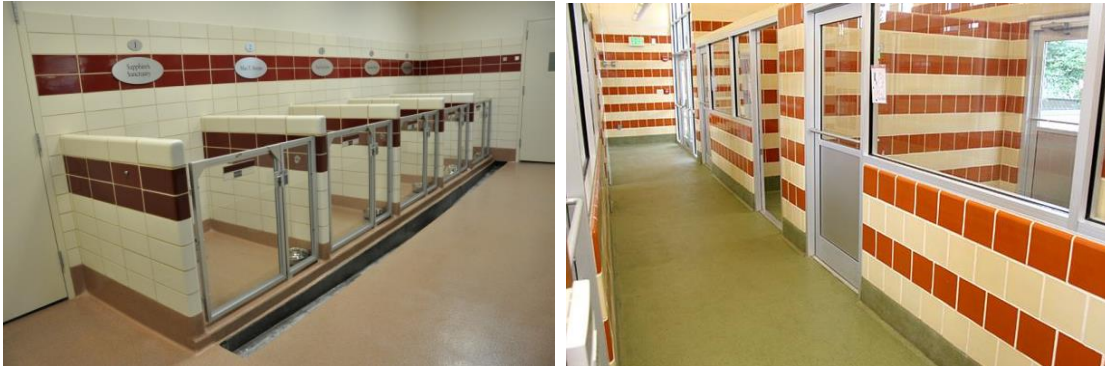


STRUCTURAL GLAZED TILE FOR ANIMAL FACILITIES



The Elgin Butler Company has been in operation since 1873. For much of that time, we have been manufacturing and selling *Ceramic* glazed Structural Clay Products, with many wall system installations in wet areas that also require an ultra-clean environment. The concerns in animal facilities, such as the spread of diseases, the daily use of corrosive chemicals and steam cleaning are easily handled by the impervious ceramic finish on Structural Glazed Tile (SGT). The smooth, chemical resistant and easy to clean finish is durable and gives you a permanent wall system for the life of your building with very little or no maintenance. They *never* need refinishing. The use of color in areas such as the clinics and offices will result in a more pleasant environment. Install your structural load bearing (thin wall design) or non-load bearing wall and finish in one unit and installed by one trade! **“SGT” meet the performance requirements you need and are also designed to meet today’s economic concerns.**

The following ASTM Standards apply:

ASTM C-126

- Chemical Resistant
- Fade Resistant
- Impervious Finish that is fires into the body of the fireclay unit at over 2000°F.
- Chip Resistant
- Never peels or needs refinishing
- Fire Resistant
 - Zero Smoke Density
 - Zero Flame Spread
 - Zero Toxic Fumes
- No off gases

ASTM C-126 and/or ASTM C-652

- Physical Properties
- Load Bearing and Non-Load Bearing applications

General sizes available:

- 4W Series, 7 5/8" x 7 5/8" face size in 2", 4", 6" and 8" bed depths. Can be vertically reinforced
- 6T Series, 5" x 11-11/16" face size in 2", 4", 6" and 8" bed depths. Vertical cell units available
- 8W Series, 7 5/8" x 15-5/8" face size in 2", 4", 6" bed depths. Vertical cell units available
- Sized for a 3/8" mortar joint except for 6T series which is 5/16". Grade 'SS' for tighter tolerances is available.

Many sizes, shapes, and colors available, 4W(8"x8") units that can be horizontally and vertically reinforced are available.

NOTE- Standard Type N or S mortars can be used. Raking back the joint and pointing with appropriate joint filler for sanitary conditions. Sized for a 3/8" mortar joint except for 6T series which is 5/16". Grade "SS" for tighter tolerances is available.

ELGIN | BUTLER